

## Are You Washing Your Hands With Germs?



### How does bulk soap become contaminated?

- Bulk soap dispensers are open to the environment.
- E-Coli and Salmonella commonly found in washrooms can lead to contamination.
- No standards exist for cleaning and sanitizing bulk dispensers.
- New soap is tainted as it is added to contaminated soap.

**Open, refillable bulk soap dispensers can put your business at risk. A study<sup>1</sup> conducted by the University of Arizona by Dr. Charles Gerba showed:**

**25%** of refillable bulk soap dispensers contained unsafe levels of bacterial contamination.

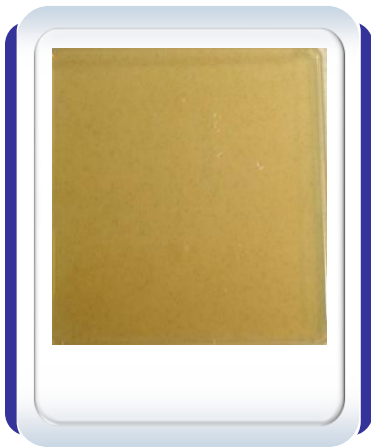
**16%** of the samples contained coli forms, illness causing fecal based organisms.

**0%** No bacterial contamination was found in soap from sealed / cartridge style dispensers.

<sup>1</sup> Dr. Charles P Gerba Bulk Soap Contamination, Unpublished Studies. University of Arizona 2006, 2007.

## Germs Stick to Hands Washed with Contaminated Soap

**Bacteria Transfer and Cross-Contamination Risks are High**  
Study<sup>2</sup> conducted by BioScience Laboratories, Inc.



**Before washing  
with contaminated  
bulk soap**

Washing hands with contaminated soap results in contaminated hands.



**After washing with  
contaminated bulk soap**

Bacteria from contaminated hands can be transferred to other surfaces.